

MTA - gestalt hodos  
Alto Saxophone

III

play!

A

→ violoncello

B



viola:

MTA - gestalt hodos  
Violoncello

II

**double bass:**  
pizz.

A

slide with strong bow pressure

arco saltando

flip finger on corpus

→ bass clarinet

B

any order of tones,  
irregular rhythms

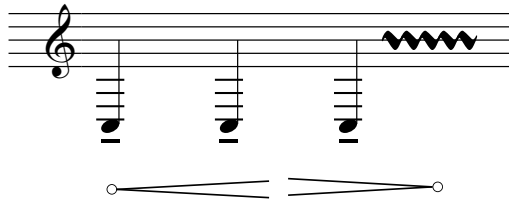


alto sax:

MTA - gestalt hodos  
Bass Clarinet

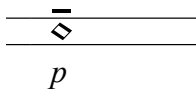
IV

**play!**

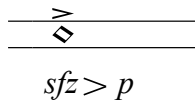


A

air into mouthpiece

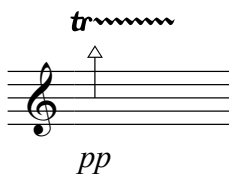


air into mouthpiece



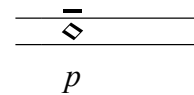
→ double bass

as high as possible

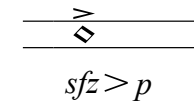


B

air onto mouthpiece



air onto mouthpiece



violoncello:

